

Simpli-WiFi Configuration Guides for Microsoft Windows XP and Vista

Microsoft Windows XP	2
Wireless Configuration for VISTA.....	7

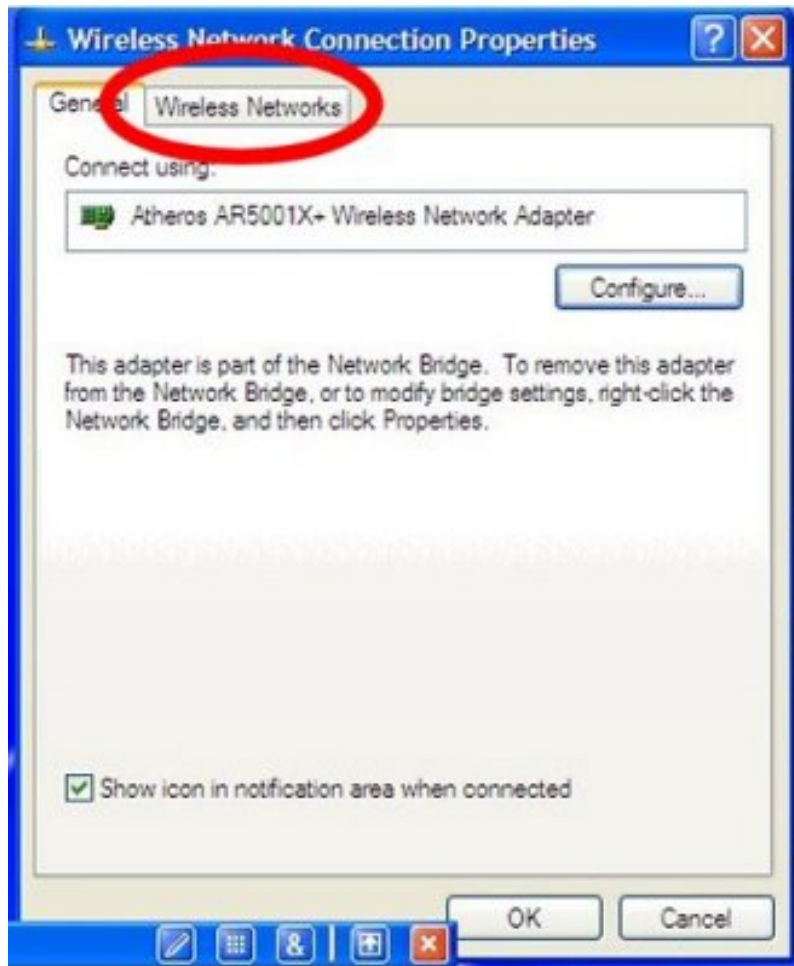
Microsoft Windows XP

Simpli-WiFi workers must know how to set up their mobile gear to connect to WiFi locations. Using WinXP in this tutorial, we'll go through the steps for setting up a laptop to access a WiFi network. Some WiFi cards can be set to automatically detect and connect to WiFi networks. It is still important to know how to manually set up your WiFi card to connect to a Wi-Fi network.

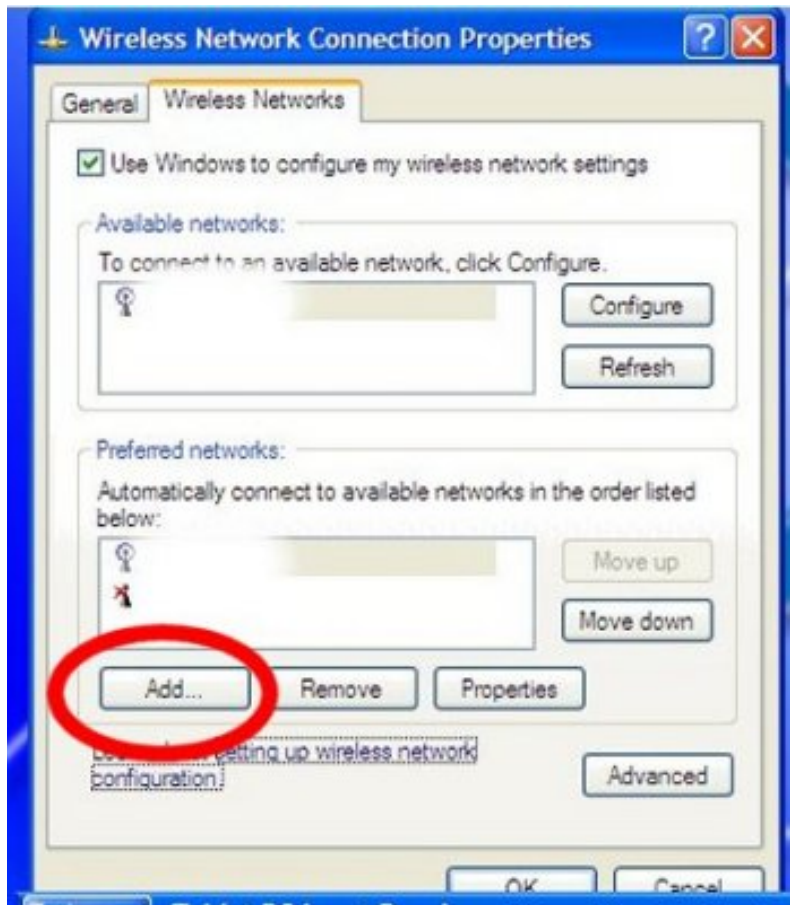
1. Before you attempt to use any WiFi network, find out what the SSID, Channel, Mode and WEP key are. Some WiFi locations do not require a WEP key. Many WiFi providers have this information on their web site or when you purchase access you will be provided the information.
2. Ensure you have a firewall program installed and running. This will protect your data.
3. Start up your laptop and once booted, look for the WiFi network icon in the bottom right of the screen.
4. Click on the WiFi Connection icon on bottom right of screen and you should see a window that indicates connection, strength and duration. Click on the Properties tab.



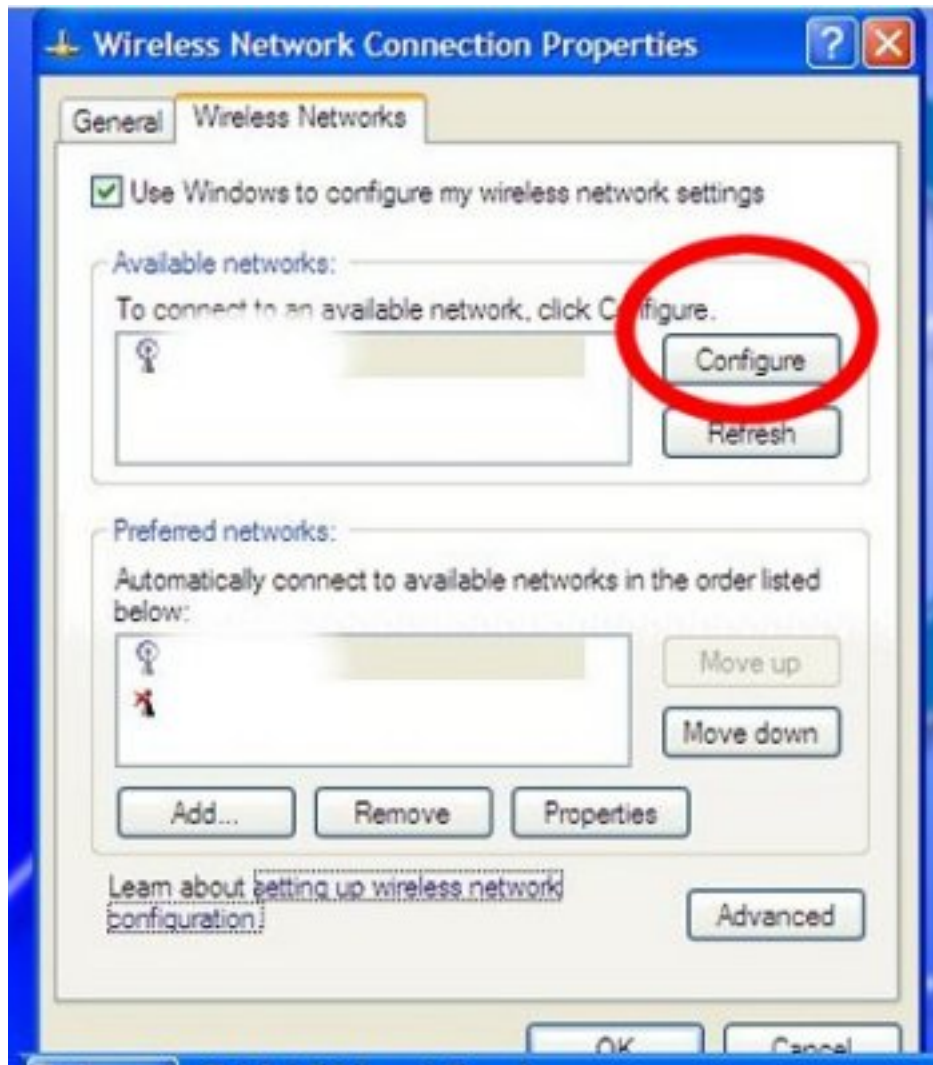
5. The next window will show the type of networking card installed. Click on the Wireless Networks tab.



6. Once the Wireless Network Connection Properties window is open you will have two options depending on how you set up your laptop.
 - o If you do not see any networks listed in Preferred or Available networks, you will have to manually add the SSID. Click on Add. You will have to enter the SSID and WEP key (if required). Click OK and you should then see the network you just added in the Available networks box.



- If you see the correct SSID showing in the Available Networks, then you need to click on Configure in order to enter the WEP key if that is required.



7. In the next window, enter the SSID for the WiFi network you want to access. Make sure you do not have CAPS lock or NUM lock while entering the information. If a network key is required, click on "Data Encryption and then enter the Network key you have been provided with. Again make sure you do not have CAPS or NUM lock on. Click OK when entered. If you have entered the key incorrectly a message will pop up and you will need to re-enter the key.



8. Next go to Start - and where it says Connect To click on that and you should see choices like in the graphic below. Click on Wireless Network Connection and it should work.

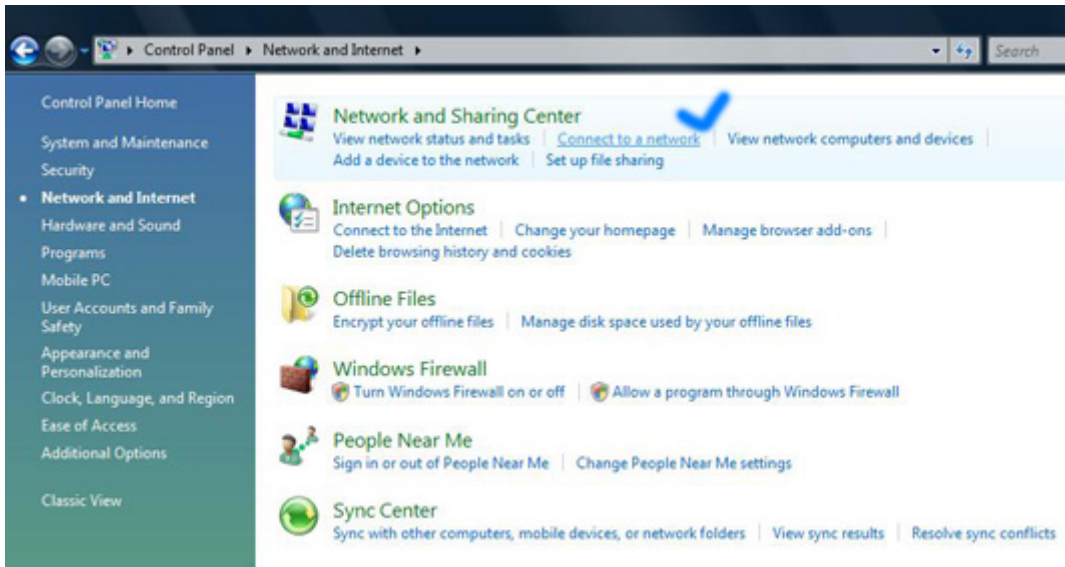
Wireless Configuration for VISTA



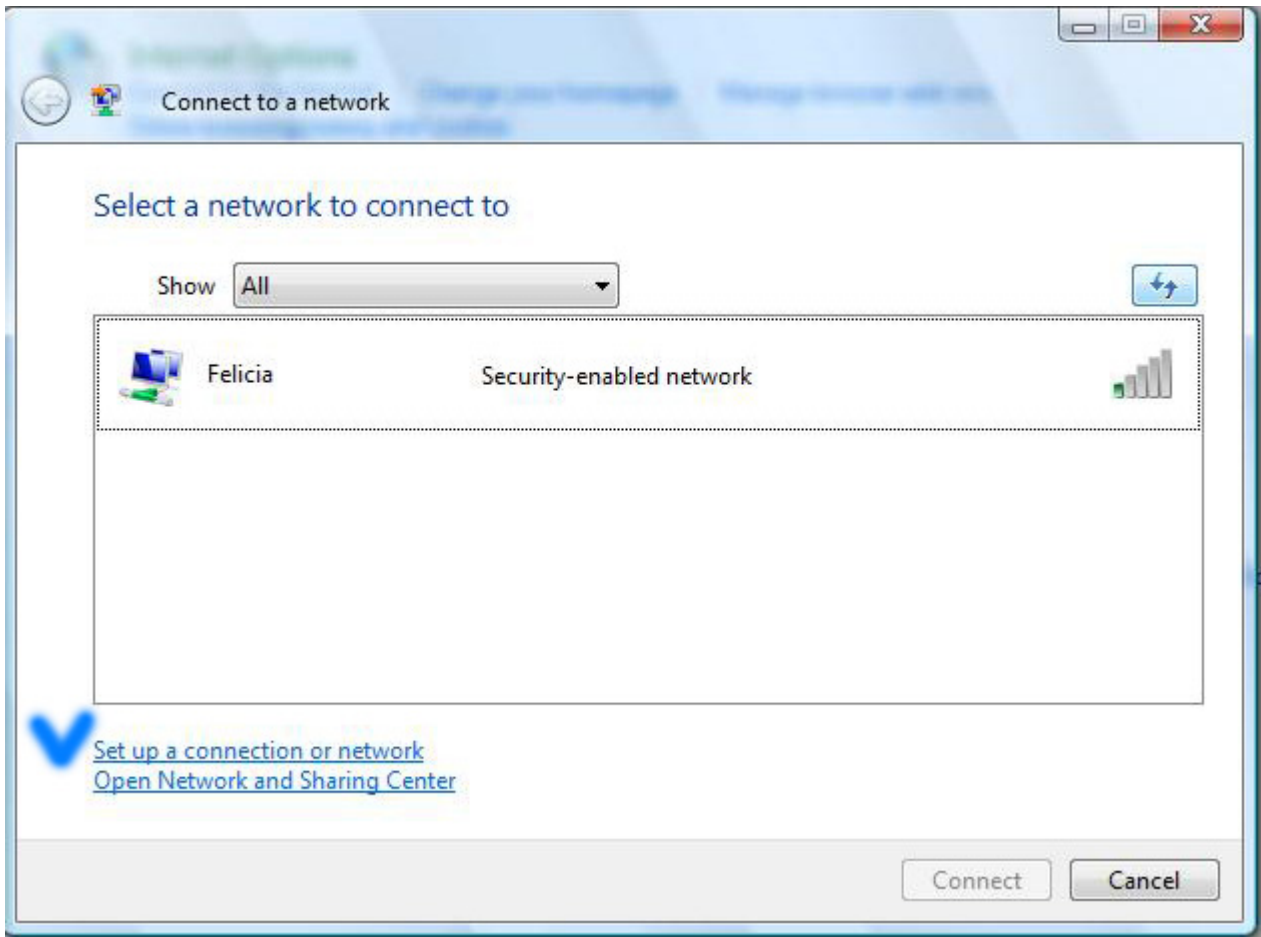
In this tutorial we will show you how to connect to a wireless network using Windows Vista. As you will see by yourself this is a pretty simple procedure.

All you have to do is follow these simple steps:

First, go to *"Start Menu" -> "Control Panel" -> "Network and Internet"*.



Now... go to *"Network and Sharing Center"* and select *"Connect to a network"*, like it is shown in the above screenshot.



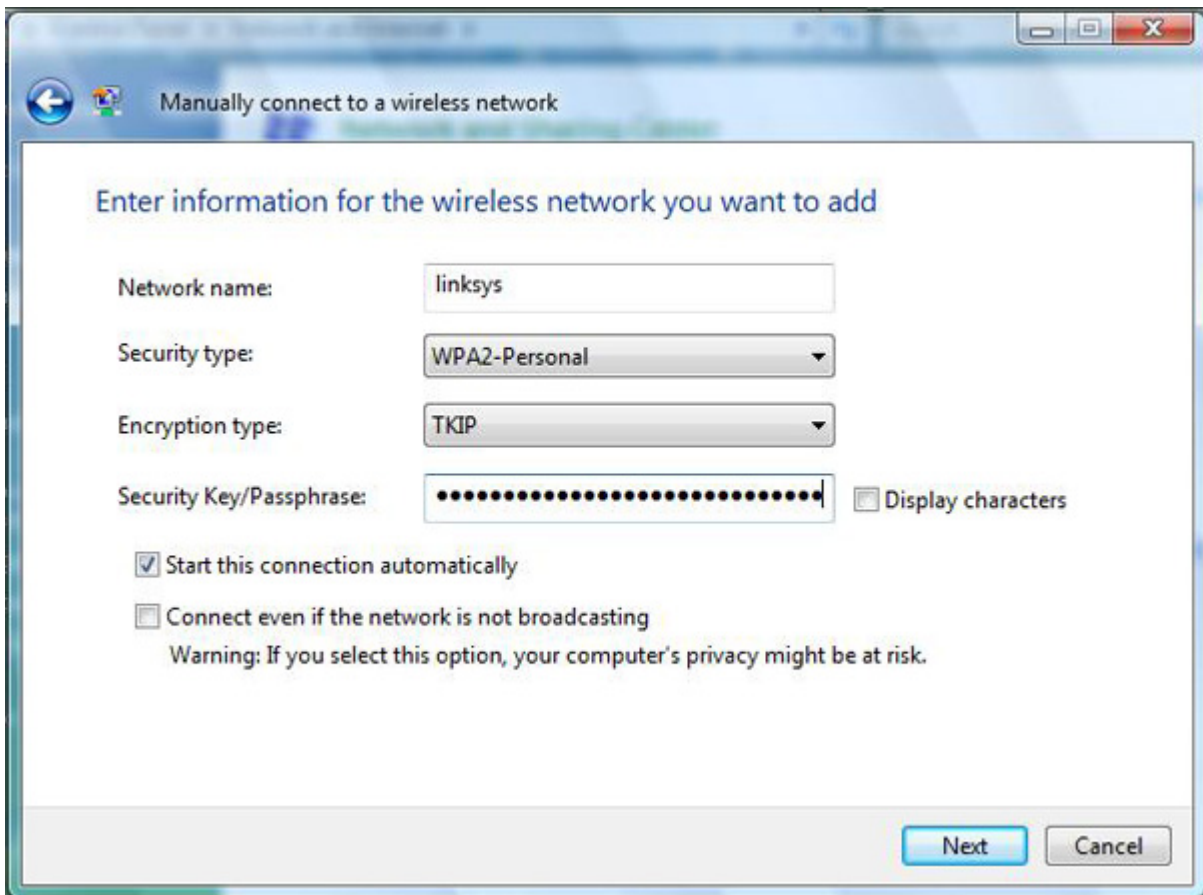
Choose *"Show All"* and hit the refresh button. If you find active network connections, select the one you want, click on *"Connect"* and don't forget to check the option that says *"Start this connection automatically"*. If you check this option, Windows Vista will connect automatically to the selected network every time you log in.

If no networks are found, you can manually enter all network settings. This is how you do it:

In the *"Connect to a network"* window, click on *"Set up a connection or network"*, like shown in the above screenshot. Select *"Manually connect to a wireless network"* and press the *"Next"* button.

First, enter the *"Network name"*. In some cases the network name is identical to the name of the router –

Choose the security type and the encryption you use on your network. Now type the security key and check the option *"Start this connection automatically"*.



Click the *"Next"* button, then click *"Connect to..."* and that should be all. You successfully configured a connection to a wireless network.



There are occasions when the connection doesn't work, in these cases check your firewall software and make sure it allows you to connect to the WiFi network. To check this, disable your firewall software and check the connection again. If you can connect with the firewall program disabled, you change your settings. If your firewall program is not the problem check the SSID and WEP key information that you entered. Both of these are case sensitive. If you had obtained SSID information from the Internet, check with someone in the establishment to see if the SSID has been changed.